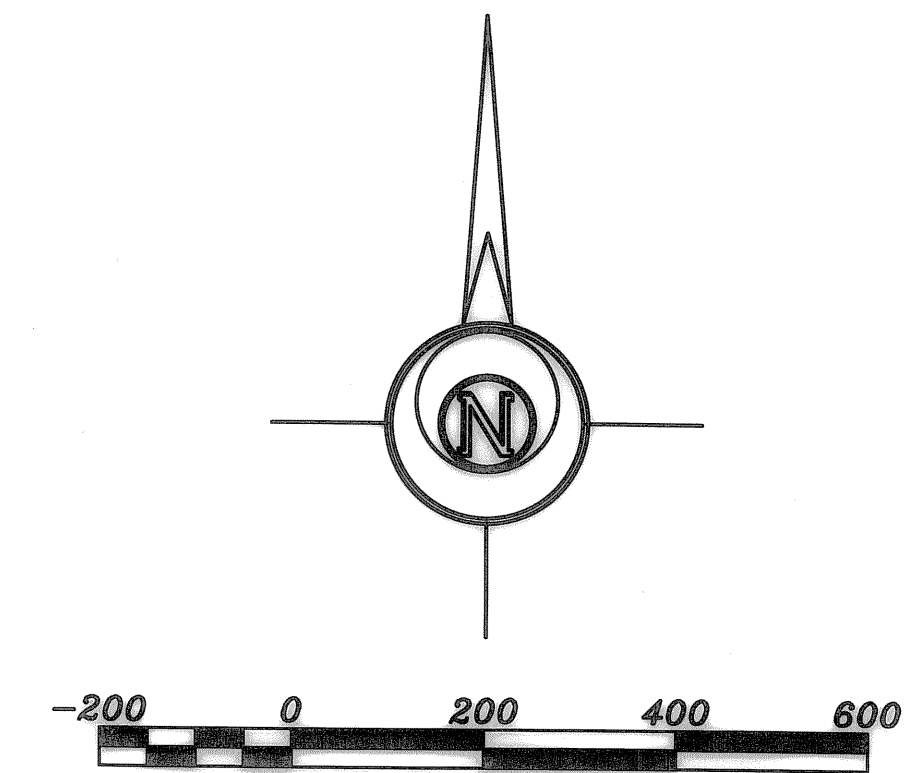


# HIDEAWAY ACRES

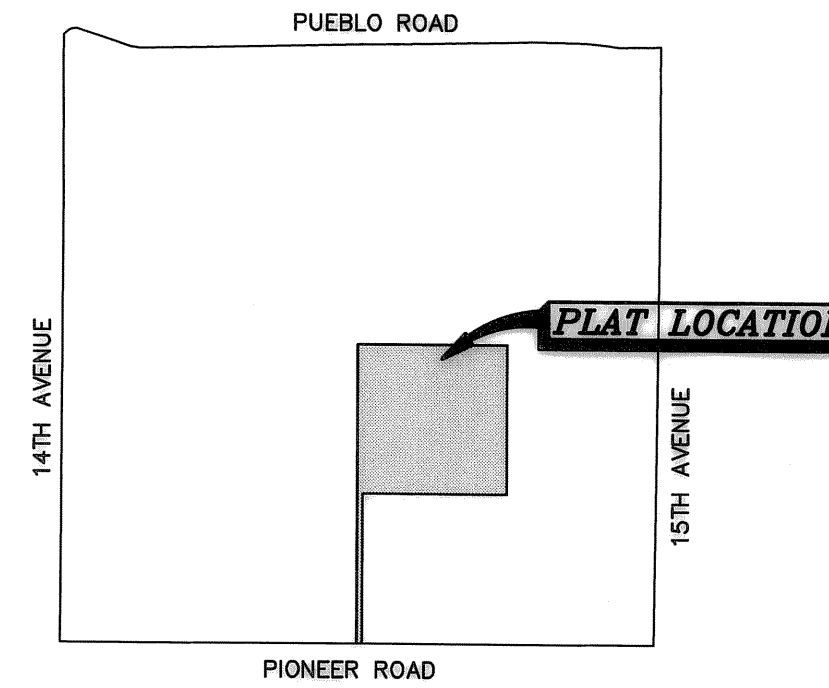
A PORTION OF THE SOUTH HALF OF THE SOUTHEAST QUARTER SECTION 21, TOWNSHIP 18 SOUTH, RANGE 3 WEST OF THE 6TH PRINCIPAL MERIDIAN, MCPHERSON COUNTY, KANSAS, TOGETHER WITH A REPLAT OF RESERVE "A", PONDEROSA ESTATES A SUBDIVISION LOCATED IN THE NORTH HALF OF THE SOUTHEAST QUARTER OF SECTION 21, TOWNSHIP 18 SOUTH, RANGE 3 WEST OF THE 6TH PRINCIPAL MERIDIAN, MCPHERSON COUNTY, KANSAS



BASIS OF BEARING = NAD 83 KANSAS ZONE 1502

## LEGEND

- △ - Sectional Monument Found
- ▲ - Section Monument Set (5/8" x 24" Iron Rebar w/G.S.S. Cap)
- - 5/8" x 24" Iron Rebar Set w/G.S.S. Cap
- (C) - Calculated
- (M) - Measured
- (PL) - Plat of Ponderosa Estates Subdivision
- (PS) - Previous Survey: William B Heller LS1202 February 19, 2010
- (PS) - Previous Survey: GSS Project #G2016-533
- P.O.B. - Point of Beginning



## VICINITY MAP

(NOT TO SCALE)

### CLOSURE TABLE

Northing = 0.0086  
Easting = -0.00603  
Error of Closure = 1:921873.26

## COUNTY CLERK CERTIFICATE

STATE OF KANSAS }  
COUNTY OF MCPHERSON } SS

I, the undersigned, County Clerk of McPherson County, Kansas within my respective jurisdictions, do hereby certify that at the date of this certificate, all currently due and owing taxes and special assessments of any kind assessed against any of the land included in this plat, have been paid.

Date Signed: 8/7/17

Hollie D. Melroy  
Hollie Melroy, County Clerk



## PLANNING COMMISSION CERTIFICATE

STATE OF KANSAS }  
CITY OF MCPHERSON } SS

This plat was approved by the McPherson County Planning Board on July 17, 2017.

Bob Carson, Chairman

John Versue, Secretary

Date Signed: August 1, 2017

## GOVERNING BODY CERTIFICATE

STATE OF KANSAS }  
COUNTY OF MCPHERSON } SS

The dedications shown on this plat, if any, are hereby accepted by the Board of County Commissioners of McPherson County, Kansas on August 1, 2017.

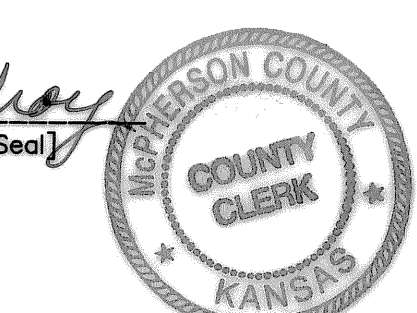
Ronald H. Loomis, Chairman

Keith Becker, Commissioner

Linda Lindweaver, Commissioner

## ATTEST:

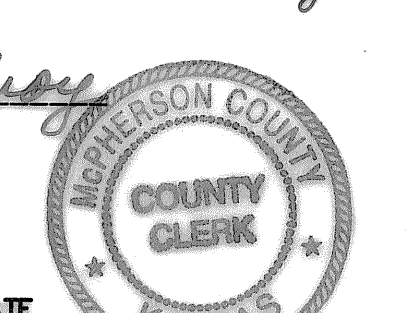
Hollie D. Melroy  
Hollie Melroy, County Clerk [Seal]



## TRANSFER RECORD

Entered on transfer record this 7 day of August, 2017.

Hollie D. Melroy  
Hollie Melroy, County Clerk

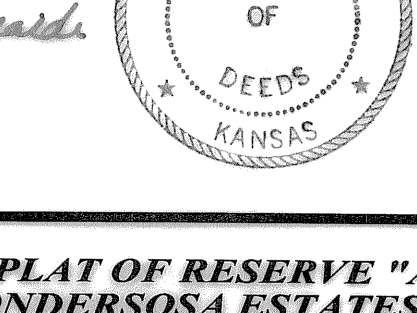


## REGISTER OF DEEDS CERTIFICATE

State of Kansas, McPherson Co., SS. 3163

This instrument was filed for record on the 7 day of August, A.D., 2017 at 2:00 o'clock PM and duly recorded in book 645, on page 42.

James P. Rayburn  
Register of Deeds



Prepared For:

FINAL PLAT

Description:

A REPLAT OF RESERVE "A", PONDEROSA ESTATES MCPHERSON COUNTY, KANSAS

Prepared By:

Garber Surveying Service, P.A.



HUTCHINSON (Main Office) 2908 North Plum St. 67502 Ph. 620-665-7032 Fax 620-663-7401  
MCPHERSON (Branch Office) 115 East Marlin 67460 Ph. 620-241-4441 Fax 620-241-4458  
NEWTON (Branch Office) 511 North Poplar St. 67114 Ph. 316-283-5053 Fax 316-283-5073

Drawn By:

KDZ

Scale: 1"=200'

Date of Field Work: June 23, 2017

Job No:

G2017-437

Checked By:

NDS

Date: 07/25/2017

Sheet 1 of 1 Sheet(s)